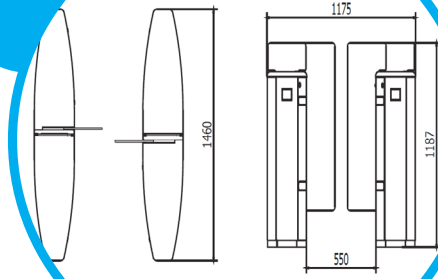


T 300 HG120 HG Gate



TURNSTILE



Specifications

Case Dimensions(WxLxH)	: 316x1460x1187 mm
Clear Walkway-adjustable	: 500-550 mm
Drive	: Motorized
Top Cover	: Wooden Top Cover
Front Cover	: 304 Grade SS
Wing Housing	: 304 Grade SS
Indicators	: LED Bars
Wings	: 10 mm Plexyglass
(Optional 10 mm Glass)	
Side Covers	: 304 Grade SS
Installation	: Simple & easy installation
Weight	: 100 Kg
Power Supply	: 115/230W AC50/60Hz
Operation Voltage	: 24VDC +-%20
Passage per Minute	: 20-30
Opening/closing Period	: 0,30 - 0,50

SPACE-SAVING ELEGANT DESIGN DURABLE MECHANISM ,FAST PASSAGE, SAFE AND SECURE , RELIABLE ,USER-FRIENDLY

T 300 HG 120 Gate offers an aesthetic option for access control, with its more stylish design, as a combination of glass wings and steel body and optionally patterned top covers adapting to many indoor locations with its outlook.

Application: T300 HG 120 can be installed in the entrance of hotels, business centers, airports, ministries, universities and any similar areas where design and aesthetic look are important.

Basic Materials: T300 HG 120 is produced in AISI 304 stainless steel body, 10 mm reinforced plexyglass wings. As an alternative, the top cover can be wooden covered by a special pvc material ,which optionally can be produced in different patterns and colours suiting project sites. Logo engraving can be on the plexyglass wings, and 10 mm glass wings can be done instead of 10 mm plexyglass wings. Plexyglass wings can be done as 180 cm high. The body can be produced in 316 AISI as well. All mechanical parts are coated with protective coating against corrosion. The electronic board is designed by Makim engineers to provide various working modes and entegrations.

General Use: T300 HG 120 have a passage width of 50-55 cm . Side and Center Units are produced to create as many passage lanes as required. Thanks to the sensor technology, T 300 HG 120 provides safety in case of any danger of getting stuck in between the gates. All kind of access control systems like card reader, biometric reader, remote control unit or push button can be entegrated to T 300 HG 120 via simple dry-contact. Once the access right is granted, the gate will open automatically and once the passage is completed, it is sensed by the sensors and the gate closes itself. It has totally 14 special sensors. If the user does not use the passage right in a given seconds, the gate will give buzzer warning and it will be closed again. Status indicator LED lights are located on both sides of T300 HG 120 , in green and red colours to show allowed passage directions.

Safety: Optional production can be done to provide manual or automatic opening of the wings in case of power cut. As an alternative, battery can be used , in order to keep T300 HG 120 working in its standard mode for a certain period while power is gone.

MAKIM®

makim.com.tr
makimaccesscontrol.com
makimturnstile.com

Factory

Address: Sincan Organize Sanayi Bölgesi, Erkunt Cad. No: 20
Sincan ANKARA
Tel: +90 (312) 267 56 87 Faks: +90 (312) 267 56 99
satis@makim.com.tr

Branch

Address: Perpa Ticaret Merkezi, B Blok Kat: 7-8 No: 987-989
Şişli İSTANBUL
Tel: +90 (212) 210 29 41 Faks: +90 (212) 210 68 15
sube@makim.com.tr